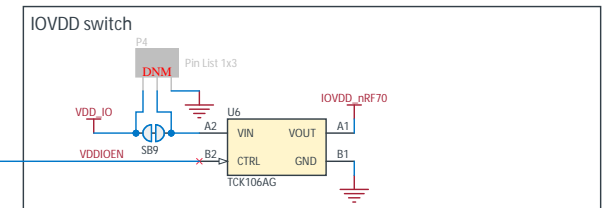
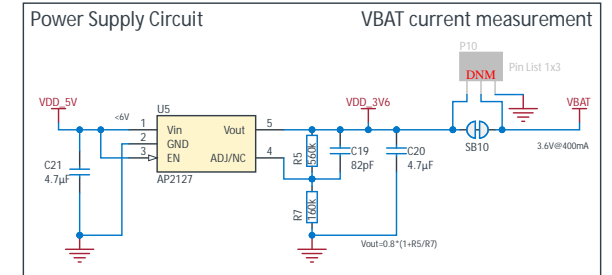
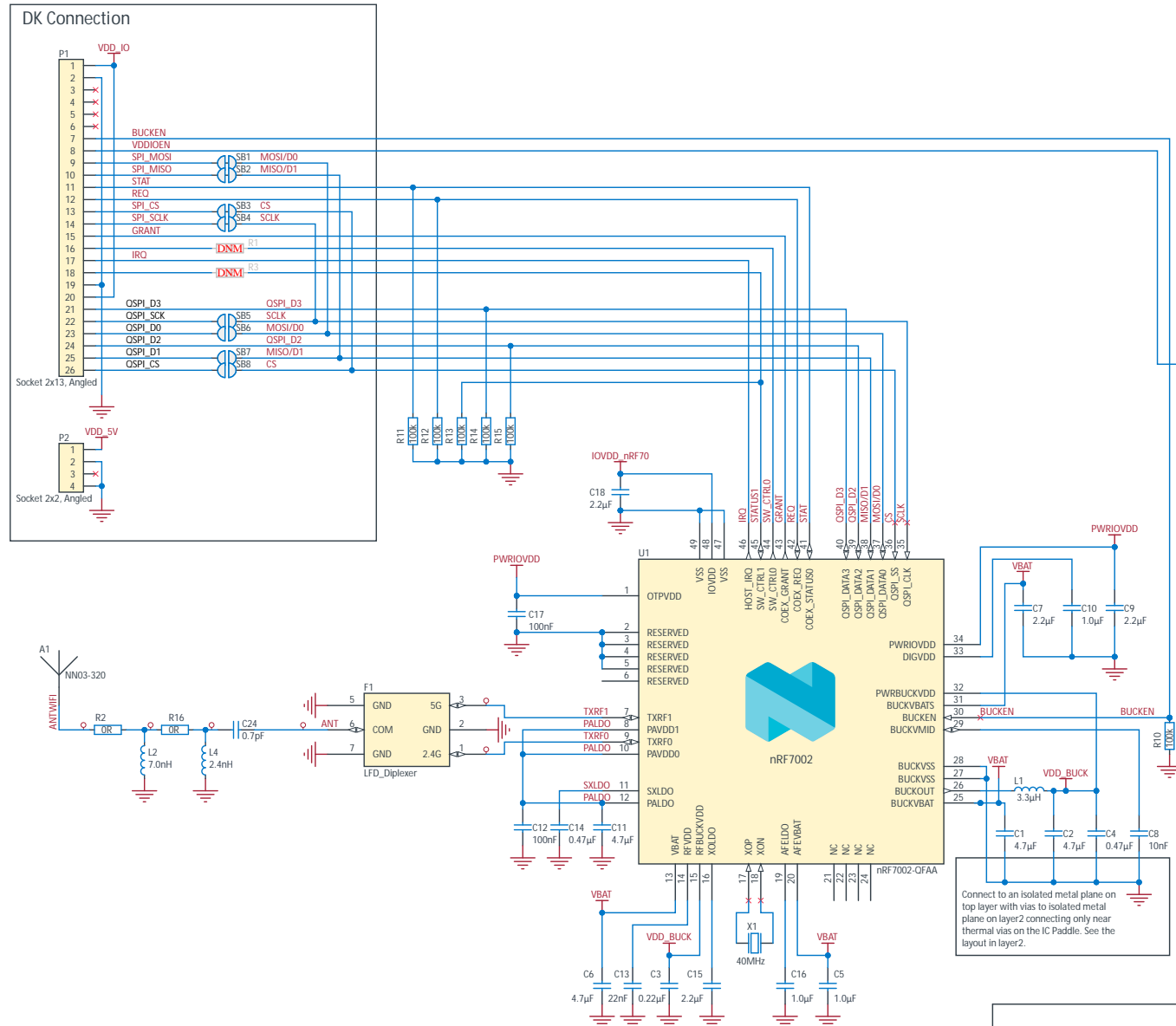


nRF7002 Expansion Board II (PCA63571)



- ✗ The No ERC object is a design directive. This directive is placed on a node in the circuit to suppress harmless warnings and/or error violation conditions that are detected when the schematic project is compiled.

Logo's and markings

LABEL1
PCA63571
1.0.0
<year>. <week>
<ID>



WEE Symbol

Title
nRF7002-Expansion Board II

Size	PCB Assembly Number
A3	PCA63571

Date:	15.10.2025
File:	pca63571.S
Classification:	Pu

Revision	1.0.0
----------	-------

Sheet 1 of 1
Drawn By: HANY

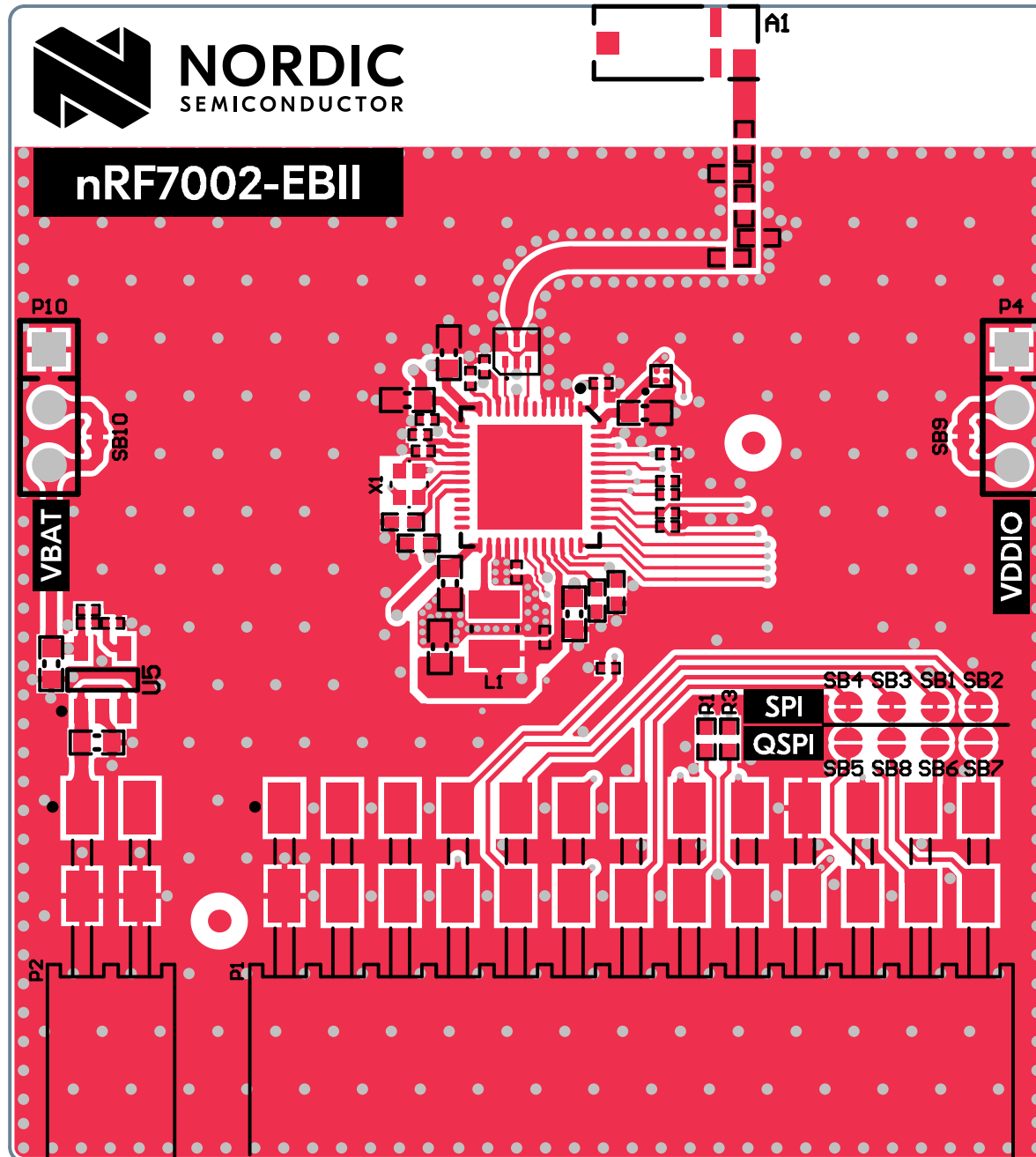


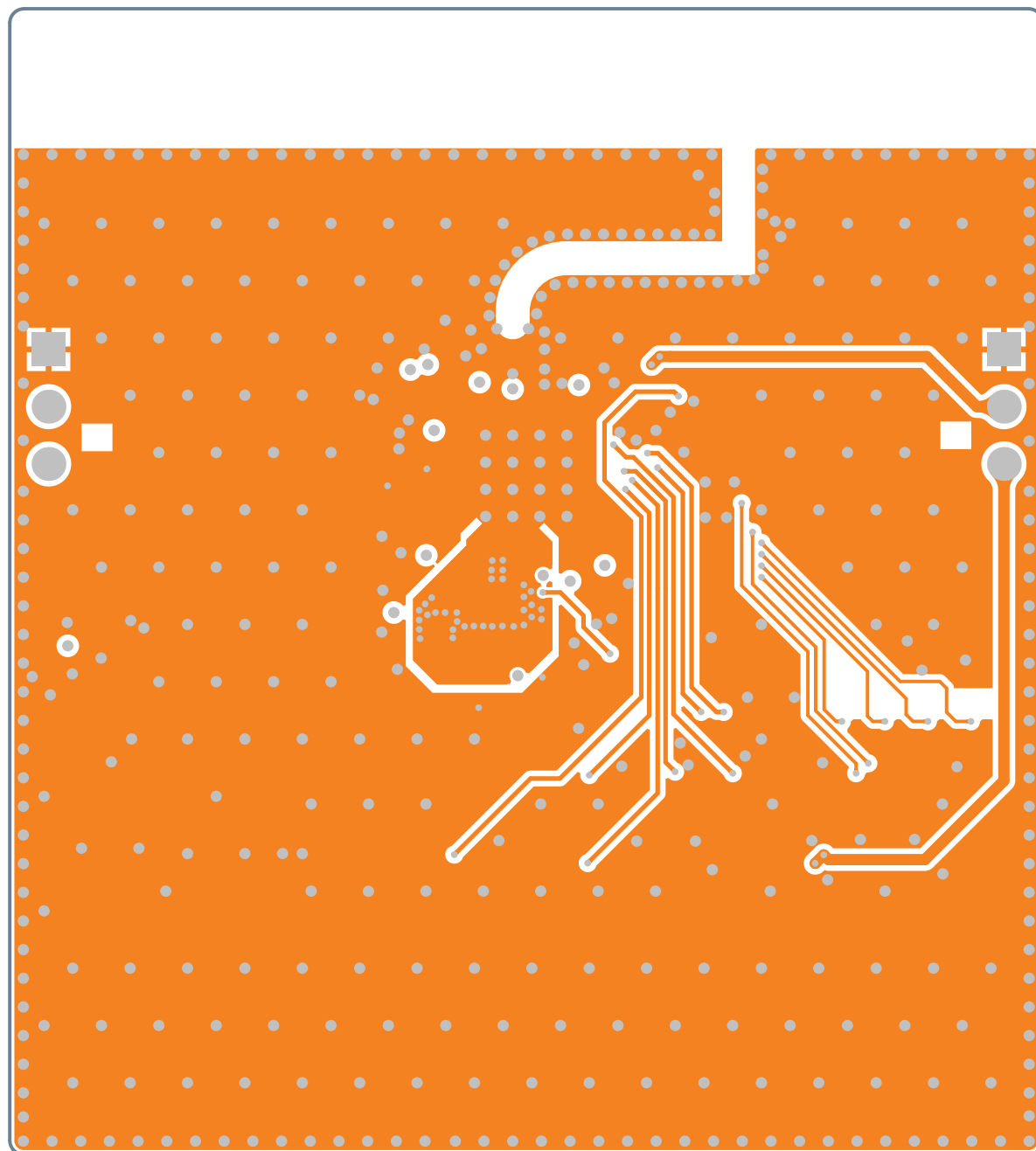
Board fiducials

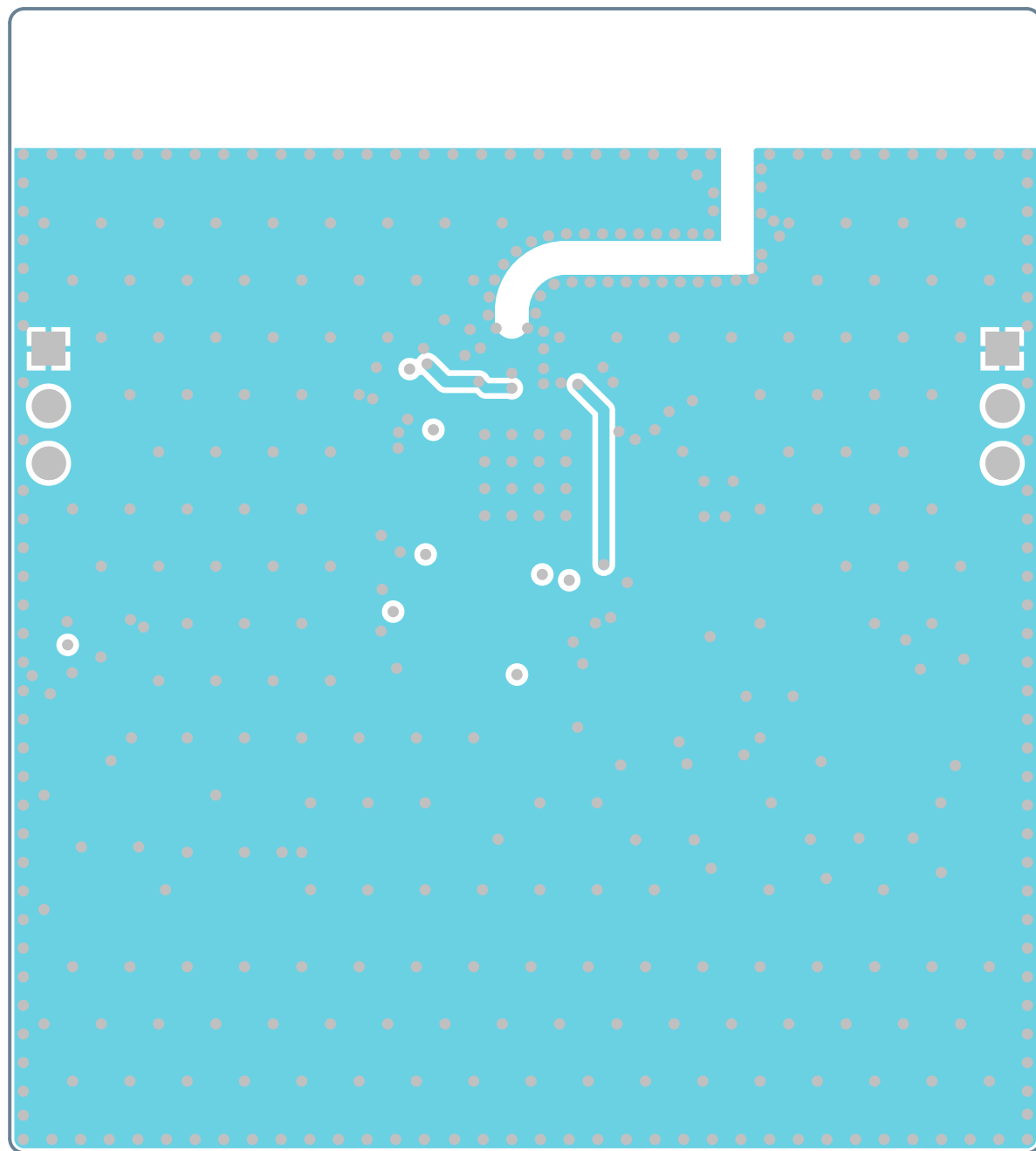


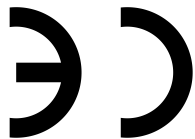
NORDIC
SEMICONDUCTOR

nRF7002-EBII

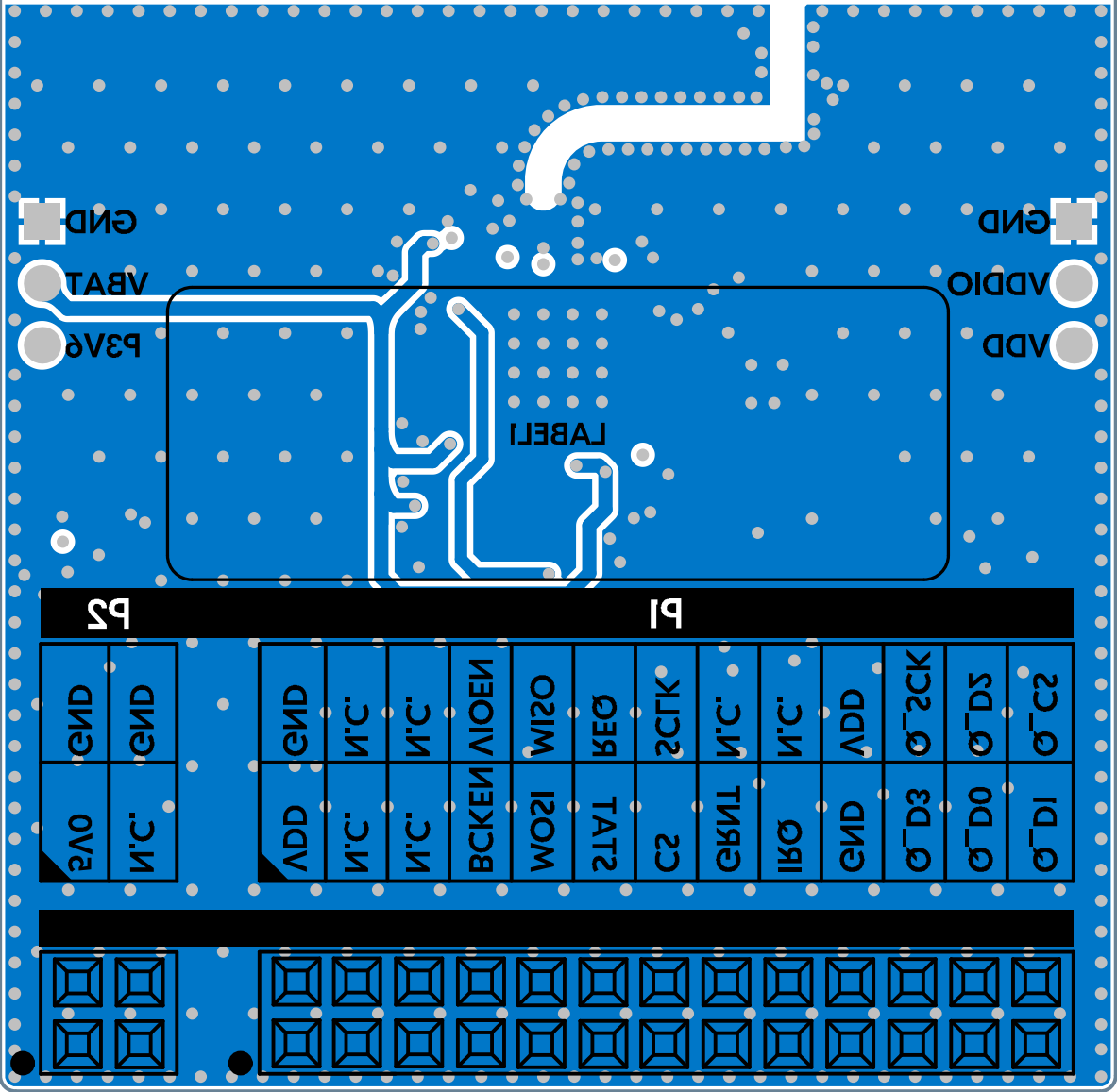








0021HANY
400903





NORDIC
SEMICONDUCTOR

nRF7002-EBII



SB10

VBAT



P2

P1

X1

L1

SB9



VDDIO



SPI
QSPI

SB4 SB3 SB1 SB2
SB5 SB8 SB6 SB7



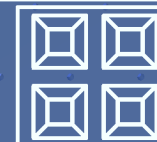
VBAT

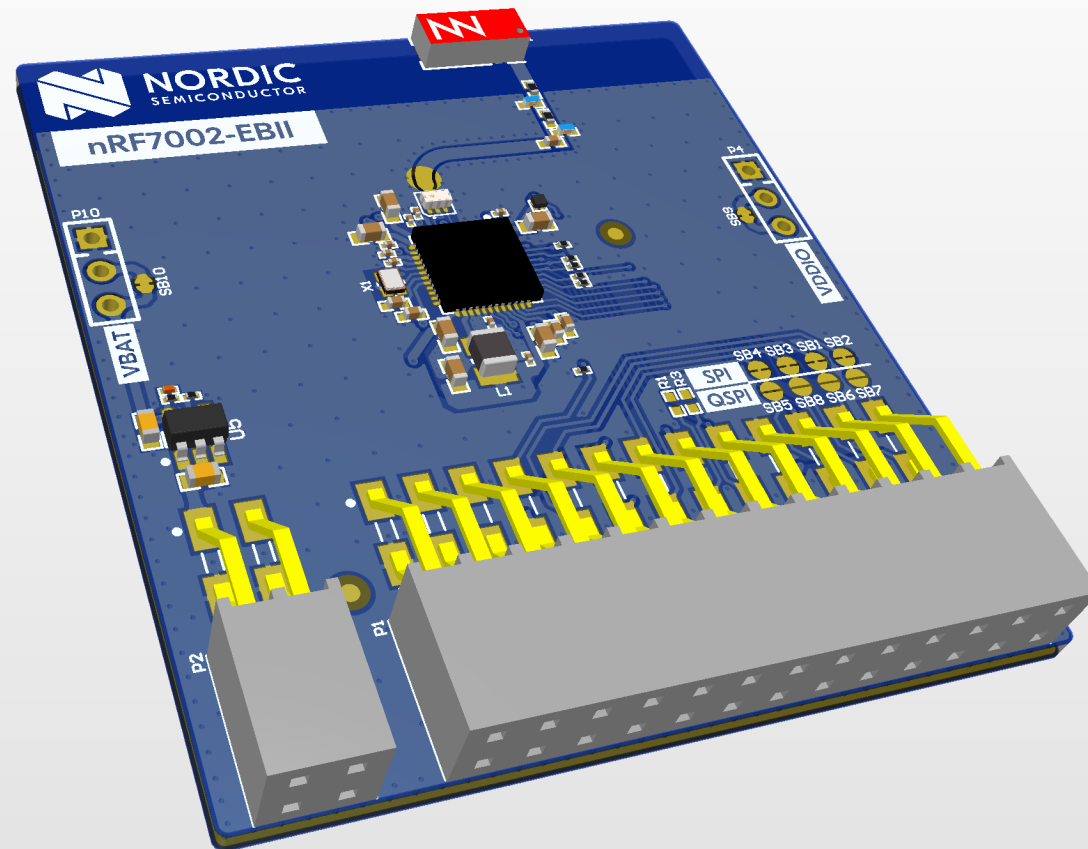
P3V6 

P1

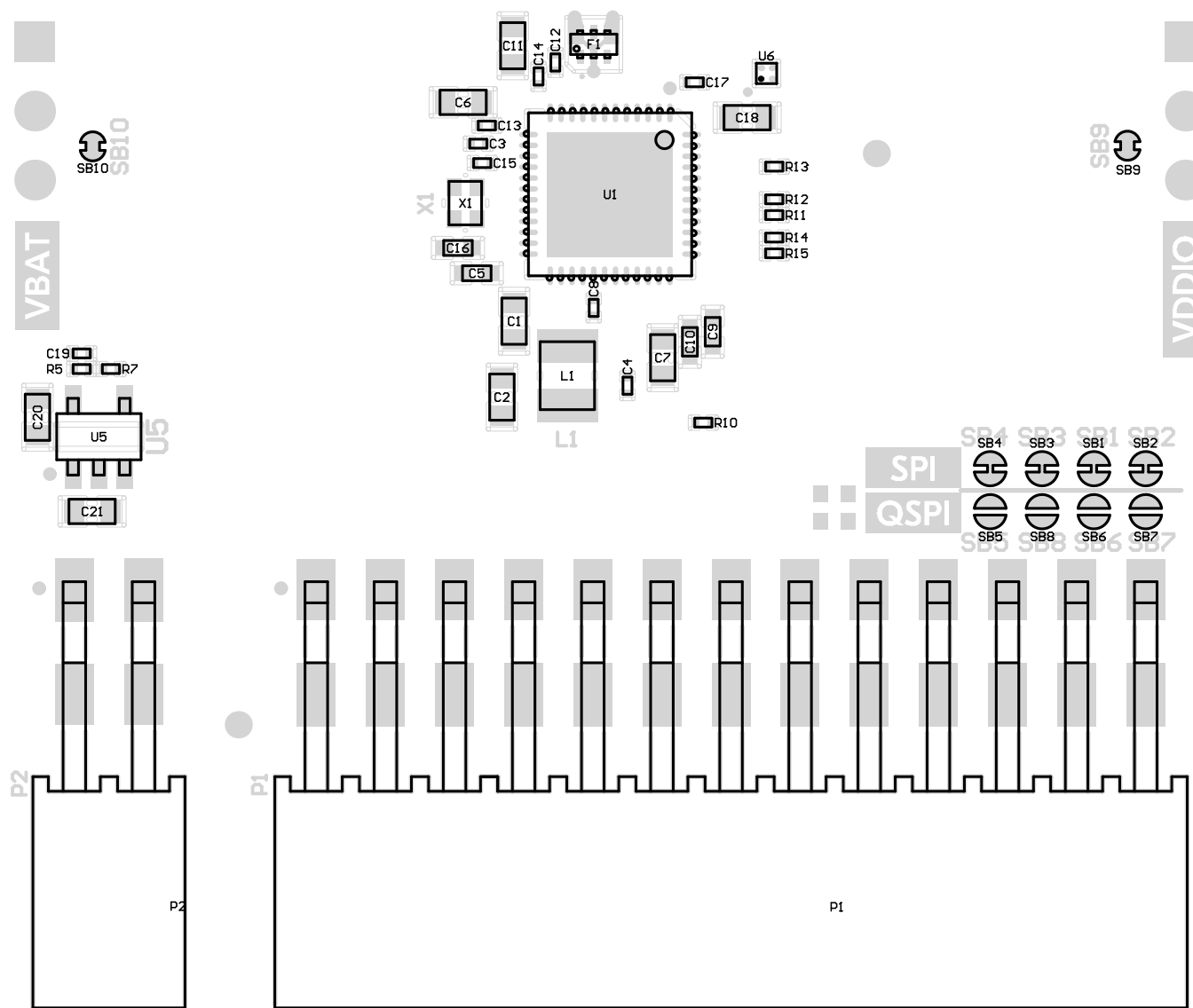
P2

N.C.	GND
5V0	GND





nRF7002-EBII



400902
007IHANY



 GND

 VDDIO

 VDD

GND 

VBAT 

P3V6 

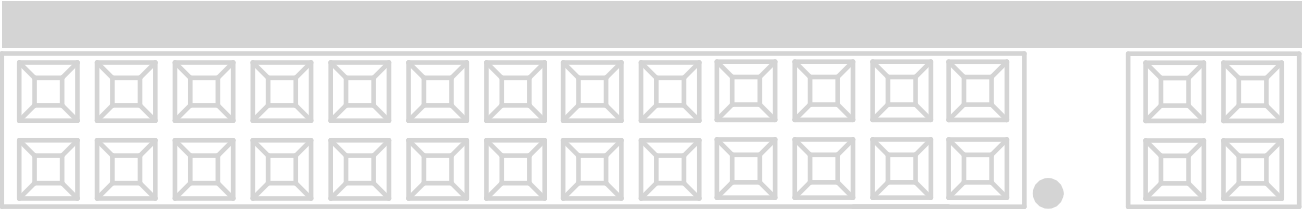


LABEL1

P1 P2

Q_CS	Q_D2	Q_SCK	VDD	N.C.	N.C.	SCLK	REQ	MISO	BCKEN	VIOEN	N.C.	N.C.	GND
Q_DI	Q_D0	Q_D3	GND	IRQ	GRNT	CS	STAT	MOSI	N.C.	N.C.	VDD		

GND	GND
N.C.	5V0



Bill of Materials



Product Name: nRF7002 Expansion Board II

Board: PCA63571

Source:	1.0.0.0
Version:	1.0.0

Creation Date: 15.10.2025

Designator	Value	Description	Footprint Doc	Manufacturer	Manufacturer Part Number	Fitted	Quantity
A1	NN03-320	Dual-Band GNSS and Wi-Fi/BluetoothAntenna	NN03-320	Ignion	NN03-320	Fitted	1
C1, C2, C6, C11	4.7μF	Capacitor, Ceramic, 4.7μF 25V X6S 0603,±10%	0603	Murata	GRM188C81E475KE11D	Fitted	4
C3	0.22μF	Capacitor, Ceramic, 0.22μF 10V X5R 0201, ±10%	0201	Murata	GRM033R61A224KE90D	Fitted	1
C4, C14	0.47μF	Capacitor, Ceramic, 0.47μF 6.3V X5R 0201,±10%	0201	Murata	GRM033R60J474KE90D	Fitted	2
C5	1.0μF	Capacitor, Ceramic, 1.0μF 35V X5R 0402,±10%	0402	Murata	GRM155R6YA105KE11D	Fitted	1
C7, C18	2.2μF	Capacitor, Ceramic, 2.2μF 16V X7S 0603,±10%	0603	Murata	GRM188C71C225KE11D	Fitted	2
C8	10nF	Capacitor, Ceramic, 10nF 16V X7R 0201,±10%	0201	Murata	GRM033R71C103KE14D	Fitted	1
C9	2.2μF	Capacitor, Ceramic, 2.2μF 25V X5R 0402,±10%	0402	Murata	GRM155R61E225KE11D	Fitted	1
C10	1.0μF	Capacitor, Ceramic, 1.0μF 16V X6S 0402,±10%	0402	Murata	GRM155C81C105KE11D	Fitted	1
C12, C17	100nF	Capacitor, Ceramic, 100nF 16V X7S 0201,±10%	0201	Murata	GRM033C71C104KE14D	Fitted	2
C13	22nF	Capacitor, Ceramic, 22nF 10V X5R 0201,±10%	0201	Murata	GRM033R61A223KE84D	Fitted	1
C15	2.2μF	Capacitor, Ceramic, 2.2μF 10V X5R 0201,±10%	0201	Murata	GRM033R61A225KE47D	Fitted	1
C16	1.0μF	Capacitor, Ceramic, 1.0μF 10V X7S 0402,±10%	0402	Murata	GRM155C71A105KE11D	Fitted	1
C19	82pF	Chip Cap 0201	0201	N.A.	N.A.	Fitted	1
C20, C21	4.7μF	Capacitor, MLCC	0603	Murata	GRM188Z71A475KE15J	Fitted	2
C24	0.7pF	Capacitor, C0G/NP0, 50V, ±0.05pF, 0402	0402	Murata	GJM1555C1HR70WB01D	Fitted	1
F1	LFD182G45DCJD247	Signal Conditioning 2.4GHz and 5GHz Diplexer	CAF	Murata	LFD182G45DCJD247	Fitted	1
L1	3.3μH	Inductor, 1A, ±20%, 200mOhm	1008	Murata	LQM2HPN3R3MGCL	Fitted	1
L2	7.0nH	Inductor, 570mA, ±2%, 130mΩ	0402	Murata	LQW15AN7N0G00	Fitted	1
L4	2.4nH	Inductor, 2.53A, 2%, 22mΩ, Q=30	0402	Murata	LQW15AN2N4G80	Fitted	1
LABEL1	12x32mm	PCA version label, stick-on, 12x32mm	Label	Ellico Etikett	68616	Fitted	1
P1	Socket 2x13, Angled	Socket 2x13, 2.54mm (100mil), Right Angle, SMD	SOCKET_ANG_2x13_SMD-2.54r	WCON	2185-213ZG0CYNR3	Fitted	1
P2	Socket 2x2, Angled	Socket 2x2, 2.54mm (100mil), Right Angle, SMD	WCON_2185-202ZSxCYNRX	WCON	2185-202ZS0CYNR3	Fitted	1
P4, P10	Pin List 1x3	Pin List 1x3, 2.54mm (100mil)	LIST_1x3	N.A.	N.A.	Not Fitted	0
R1, R3	0R	Resistor, ±5%, 0.063W	0402	N.A.	N.A.	Not Fitted	0
R2, R16	0R	Resistor, ±5%, 0.063W	0402	N.A.	N.A.	Fitted	2
R5	560k	Resistor, ±1%, 0.05W	0201	N.A.	N.A.	Fitted	1
R7	160k	Resistor, ±1%, 0.05W	0201	N.A.	N.A.	Fitted	1
R10, R11, R12, R13, R14, R15	100k	Resistor, ±1%, 0.05W	0201	N.A.	N.A.	Fitted	6
U1	nRF7002-QFAA	Wi-fi Dual Band Companion chip	QFN-48	Nordic Semiconductor	nRF7002-QFAAB0	Fitted	1
U5	AP2127	IC REG LDO ADJ 0.3A SOT23-5	SOT23-5	Diodes Incorporated	AP2127K-ADJTRG1	Fitted	1
U6	TCK106AG	1.0 A Load Switch IC with Slew Rate Control Driver in Ultra Small Package	WLCSPP-4	Toshiba	TCK106AG_LF	Fitted	1
X1	40MHz	XTAL SMD 1612, 40MHz, Cl=8pF, Total Tol: ±10ppm, -30 - 85C	XTAL_1612	Kyocera	CX1612DB4000D0WLLCC	Fitted	1